

1. Classify the following as Hardware or Software. Write H or S next the word.

Drive	H/S	Drive	H/S
Motherboard		BIOS	
Monitor		Word processor	
USB Port		Linux	
Windows		Ubuntu	
Pen drive		Cellphone	
RAM		Scratch program	
ROM		Printer	
Tux paint		Scanner	
Childs play		Web cam	
Internet browser		CD	
Keyboard		Quick time Media player	
Hard disk		I pod	
Powepoint		Speaker	
Impress		Microphone	
DVD Drive			

2. Fill in the blanks.

a. Identify the following pictures.

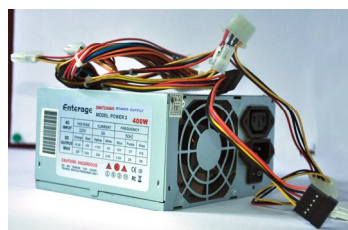
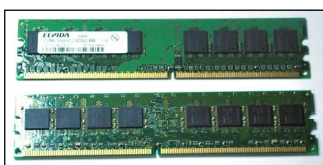
Hard disk
Scanner

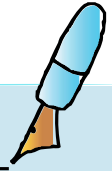
Motherboard
DVD player

Pen Drive
Flash memory

RAM
CD drive

Power supply
CD





- b. Fill from above list.
1. The documents and content that we create and other applications like word processor, Scratch are stored on the _____ .
 2. The _____ is the computer's main circuit board which holds the CPU.
 3. To back up your data, you can use a _____.
 4. The _____ is an example of a peripheral device that is used to scan documents and photographs.
 5. The _____ unit sends power through the cables to the motherboard and other components.
 6. _____ is the computer's short term memory.
 7. The software which initialiser major hardware components of the computer resides in a _____ . This software also statrts the _____ .

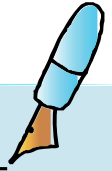
3. Play scrabble.

Choose required number of letters from the scrabble rack and unscramble them to answer the questions, as shown below.

Question	List of rack images with jumbled letters	The rack image with blank tile
You normally do this to keep a copy of important documents.		
Computer uses this system to store information digitally .		
My resolution can be changed for picture clarity.		
I am the storage area responsible for storing active applications.		

4. Which of the choices below are NOT a function of the Operating system.

- a. It controls the memory needed for various processes.
- b. It controls peripheral devices.
- c. It controls the booting of a computer.
- d. It manages the user's communication with the computer.



5. Fill the missing information.

Component	Corresponding Units of measurement
Monitor screen	Pixels
Size of the monitor	
Microprocessor speed	
	GB,MB

6. What are two ways to store the data in each of the following cases?

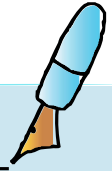
- a. Neela is working on a presentation at home. Tomorrow, she has to take it to her office and give the presentation. Her computer has an Internet connection, CD/ DVD drive and a USB port. Her company also has Internet connection at their premises:

- b. Parul is doing her home work on her home computer, which does not have an Internet connection. She has to take the work to school and show it to her teacher:

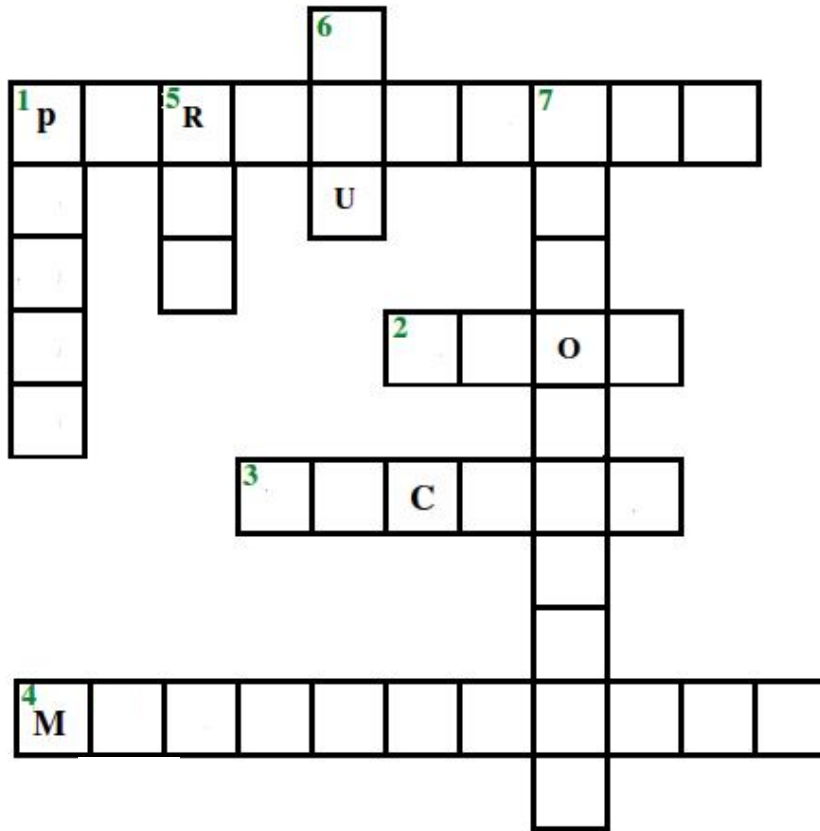
- c. Sai is writing an essay using the word processor, on a computer in the school. He wants to take the essay home to work on it. The Computer does not have a CD/DVD drive and but has a USB port. It also has an Internet connection:

7. Tanvi has typed a story and saved it on the computer.

- a. Where will the data get saved?
(Hard disk BIOS Monitor)
- b. If now she is editing the story without saving it, where will the data be kept?
(OS RAM ROM)
- c. While she was working, the power went off suddenly, what could happen to the edited information? Pick all the right answers.
- It can be partially recovered when you start the application the next time.
 - It is stored in the main memory of the computer.
 - The information is lost and cannot be got back.
 - It gets saved on the Desktop of the computer.
- d. What should she do, to avoid losing most of the data even if the power goes off suddenly?



8. Fill in the crossword.



Across

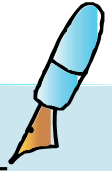
1. Through us a user interacts with the computer : _____ devices.
2. I am the software which interfaces the major hardware components of the computer with the operating system.
3. I am the duplicate (another copy) of the content that you create on the computer.
4. I am the main circuit board of a computer.

Down

1. We are used to connect the external devices and power supply to a computer. My anagram is torps.
5. I am also called the main memory.
6. I am the brain of the computer.
7. The sharpness of the display increases as the _____ increases.
Hint: The number of (horizontal x vertical) pixels.

9. Where do the following reside?

Application software	
BIOS	
Operating system	
Unsaved data in word processor	

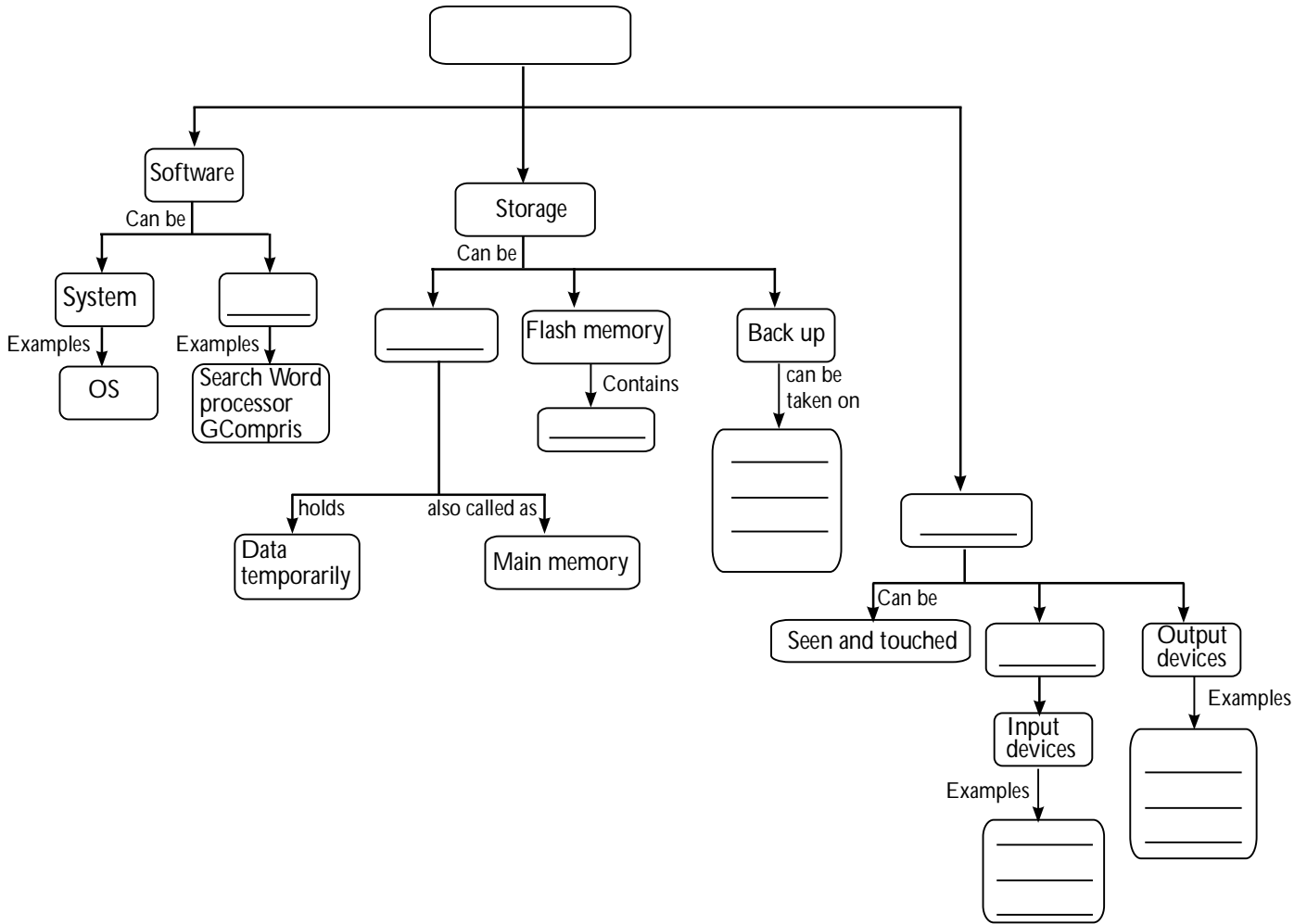


10. Fill in the appropriate blanks with the following terms.

Application
RAM
Printer
CD

Hardware
Pendrive
Mouse
Webcam

Peripheral devices
BIOS
Keyboard



11. Arrange the following sequentially. First step is already filled.

a.

Bootling starts	
Start browsing the Internet	
BIOS checks hardware components	
OS starts controlling the functions of the computer	
Computer gets power supply	1
BIOS load the operating system	

b.

User enters the user name and password	1
Word processor application opens	
OS loads the word processor application	
Icon for Word processor application on the Desktop is clicked.	
OS checks the login details and allows user to login	
OS receives the mouse click command	