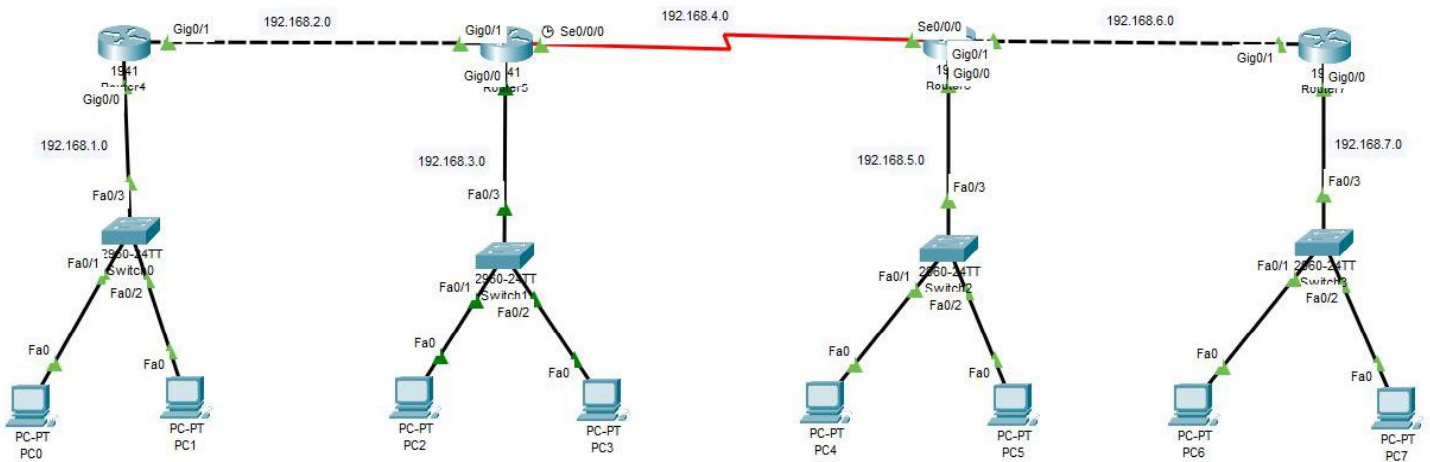




Configure the following

Use static routing to configure the following diagram:



LAN 1 Configuration	LAN 2 Configuration	LAN 3 Configuration	LAN 4 Configuration
PC0:	PC2:	PC4:	PC6:
PC1:	PC3:	PC5:	PC7:
R1: Gig 0/0	R2: Gig 0/0	R3: Gig 0/0	R4: Gig 0/0
R1: Gig 0/1	R2: Gig 0/1	R3: Gig 0/1	R4: Gig 0/1
	R2: Se 0/0/0	R3: Se 0/0/0	
Routing for R1	Routing for R2	Routing for R3	Routing for R4